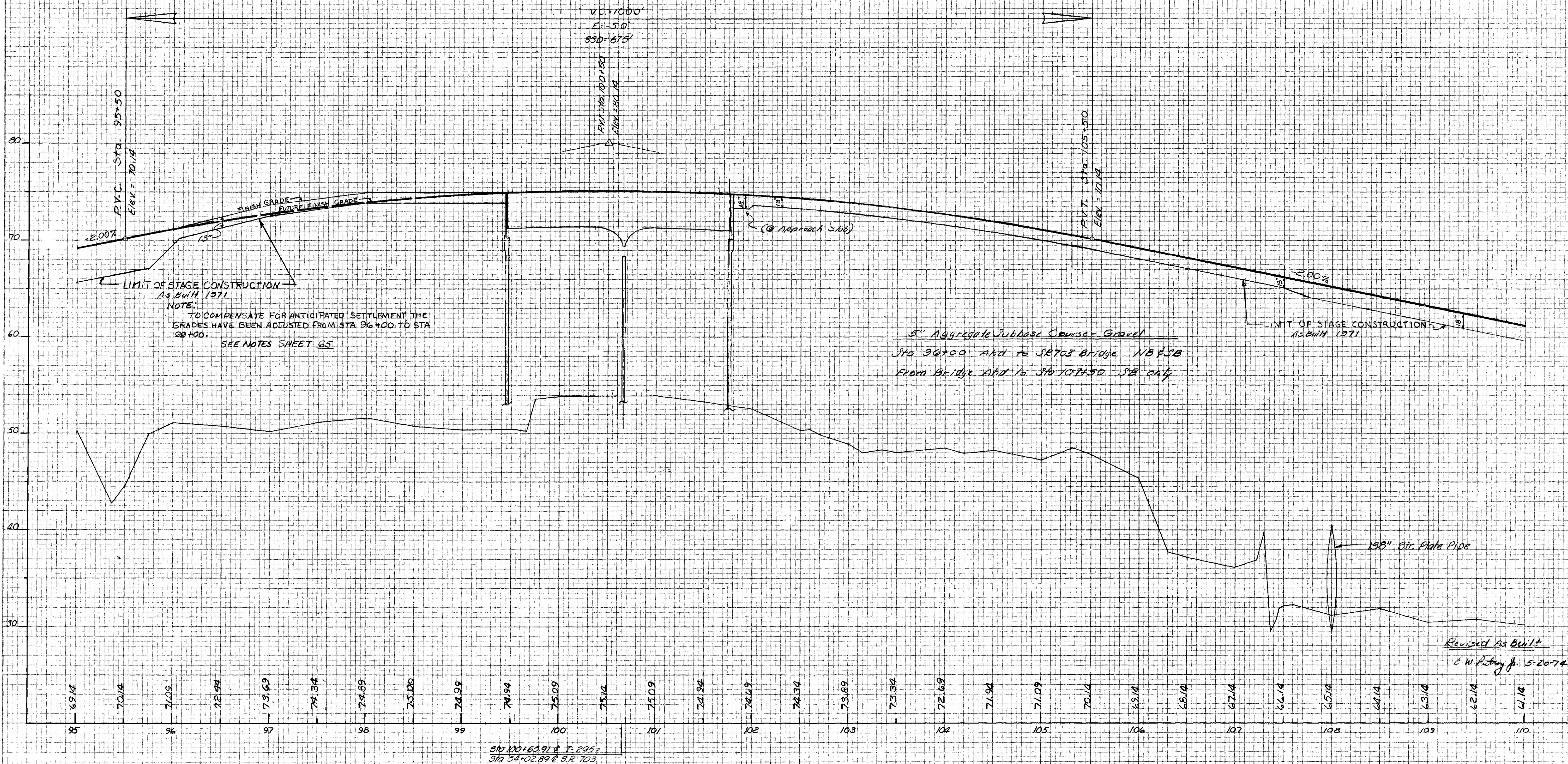


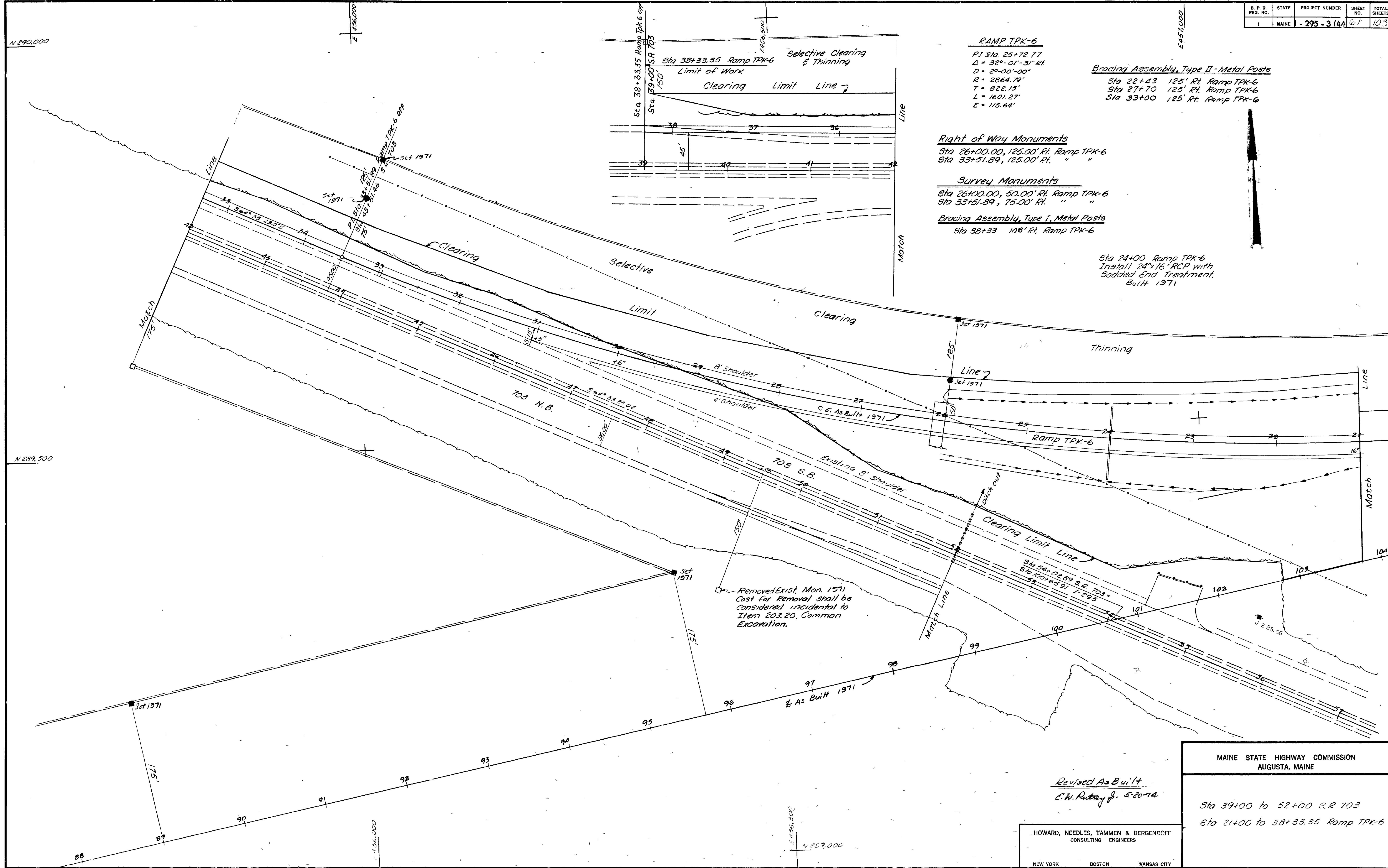
U. S. N. REG. NO.	STATE	PROJECT NUMBER	SHEET NO.	TOTAL SHEETS
1	MAINE	1-295-3 (4A)	60	103

FINAL SURVEY	BY	DATE
SURVEYED		
PLOTTED		
NOTE BOOK		
AREAS CHECKED		

ORIGINAL SURVEY	BY	DATE
SURVEYED		
PLOTTED		
NOTE BOOK		
AREAS CHECKED		







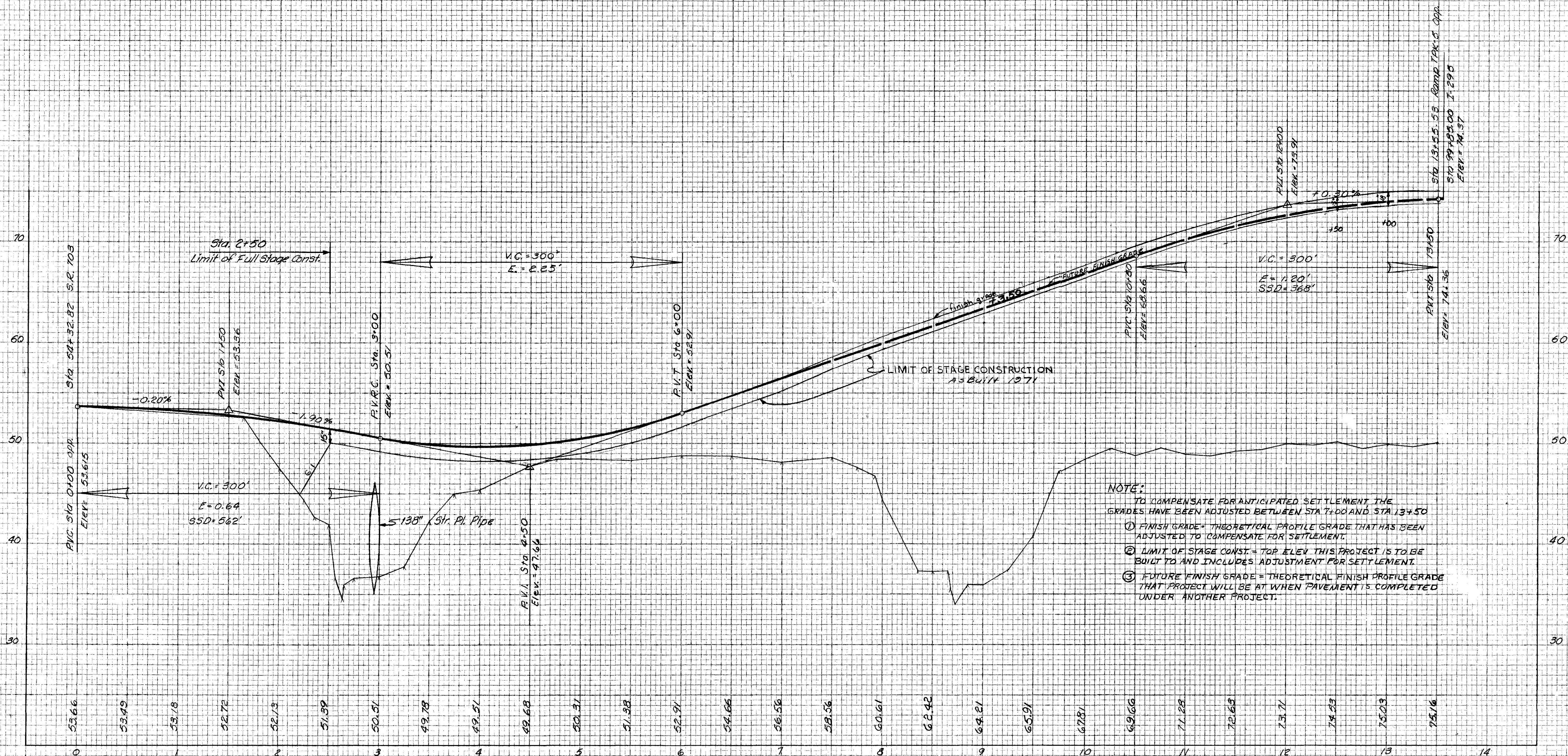
MAINE STATE HIGHWAY COMMISSION  
 AUGUSTA, MAINE

Sta 39+00 to 52+00 S.R. 703  
 Sta 21+00 to 38+33.35 Ramp TPK-6



FINAL SURVEY	SURVEYED PLOTTER	DATE
NO.	AREA CHECKED	
	NOTE BOOK	
	TEMPLATE	
	AREAS CHECKED	

ORIGINAL SURVEY	SURVEYED PLOTTER	DATE
NO.	AREA CHECKED	
	NOTE BOOK	
	TEMPLATE	
	AREAS CHECKED	



NOTE:  
TO COMPENSATE FOR ANTICIPATED SETTLEMENT THE GRADES HAVE BEEN ADJUSTED BETWEEN STA 7+00 AND STA 13+50

- ① FINISH GRADE = THEORETICAL PROFILE GRADE THAT HAS BEEN ADJUSTED TO COMPENSATE FOR SETTLEMENT.
- ② LIMIT OF STAGE CONST. = TOP ELEV THIS PROJECT IS TO BE BUILT TO AND INCLUDES ADJUSTMENT FOR SETTLEMENT.
- ③ FUTURE FINISH GRADE = THEORETICAL FINISH PROFILE GRADE THAT PROJECT WILL BE AT WHEN PAVEMENT IS COMPLETED UNDER ANOTHER PROJECT.

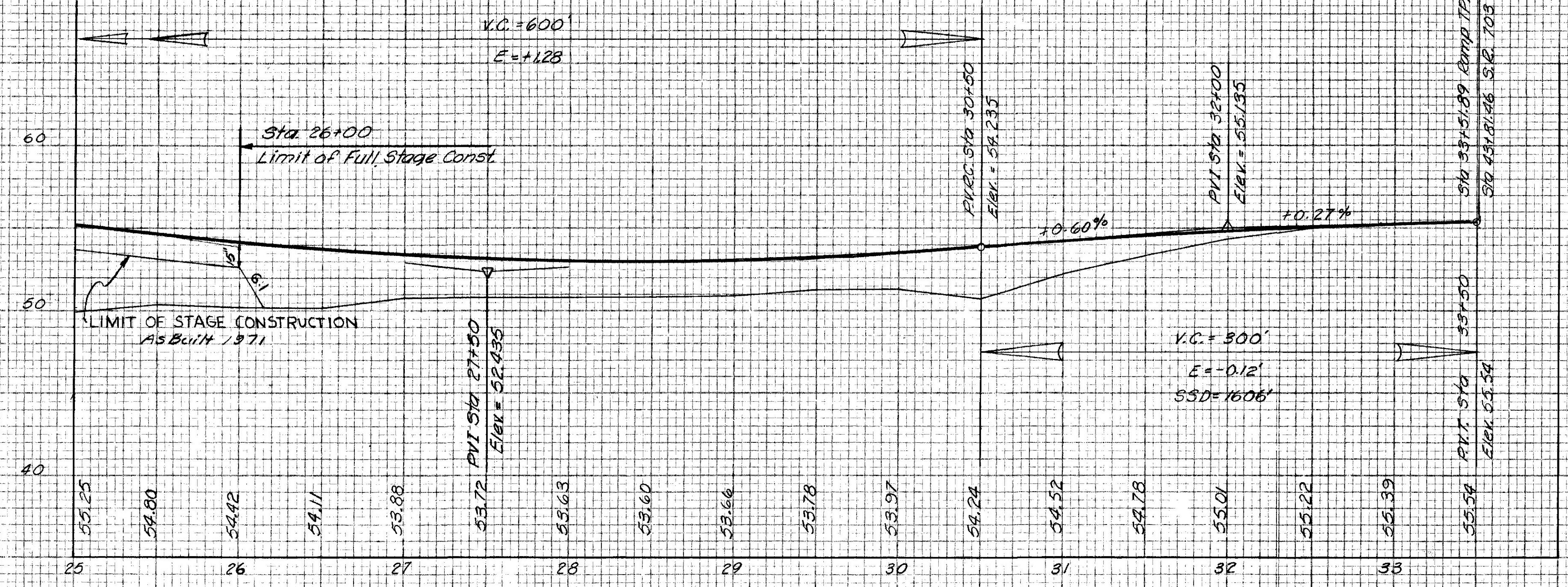
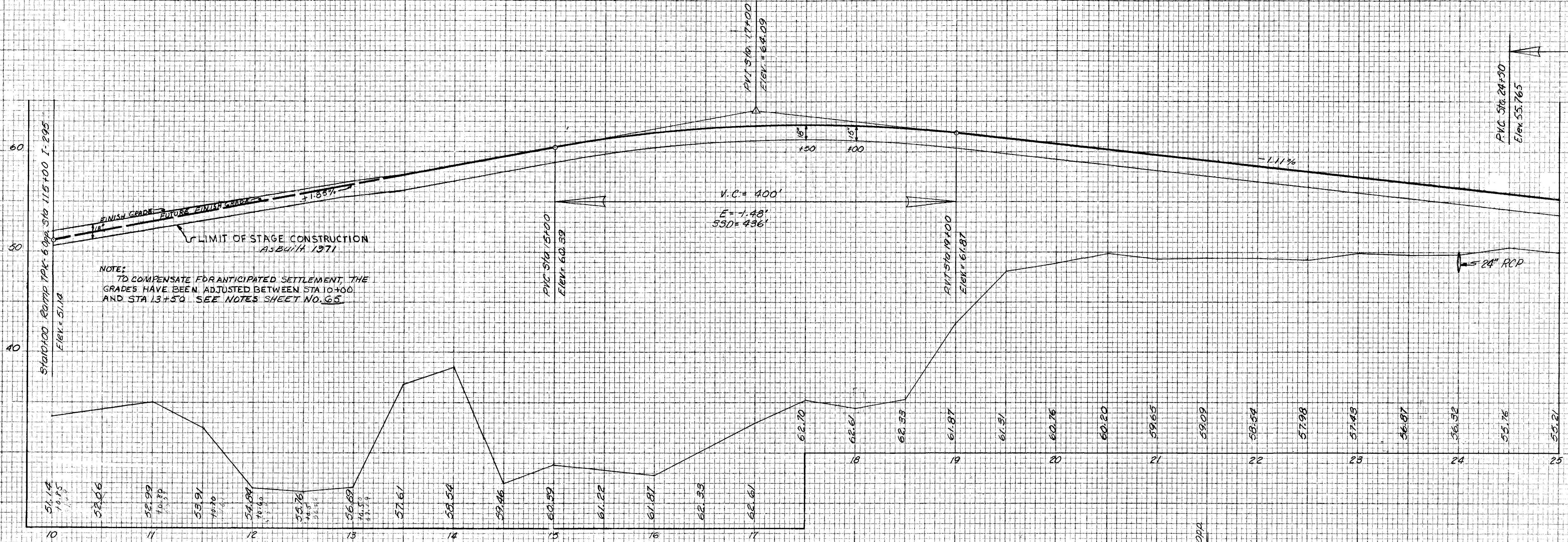
RAMP TPK-5

RAMP TPK-5  
PROFILE



FINAL SURVEY NOTE BOOK NO.	SURVEYED PLOTTER DATE	BY	DATE

ORIGINAL SURVEY NOTE BOOK NO.	SURVEYED PLOTTER DATE	BY	DATE
205/246	7/67	J.W.V.	7/67



RAMP TPK-6

RAMP TPK-6  
PROFILE

I-295 Scarborough-South Portland (Profile)

PLATE 3 CROSS SECTION B P R STANDARD  
EUGENE DETZGER CO. CHICAGO - NEW YORK

Printed in U.S.A.  
On IMPERIAL Tracing Cloth

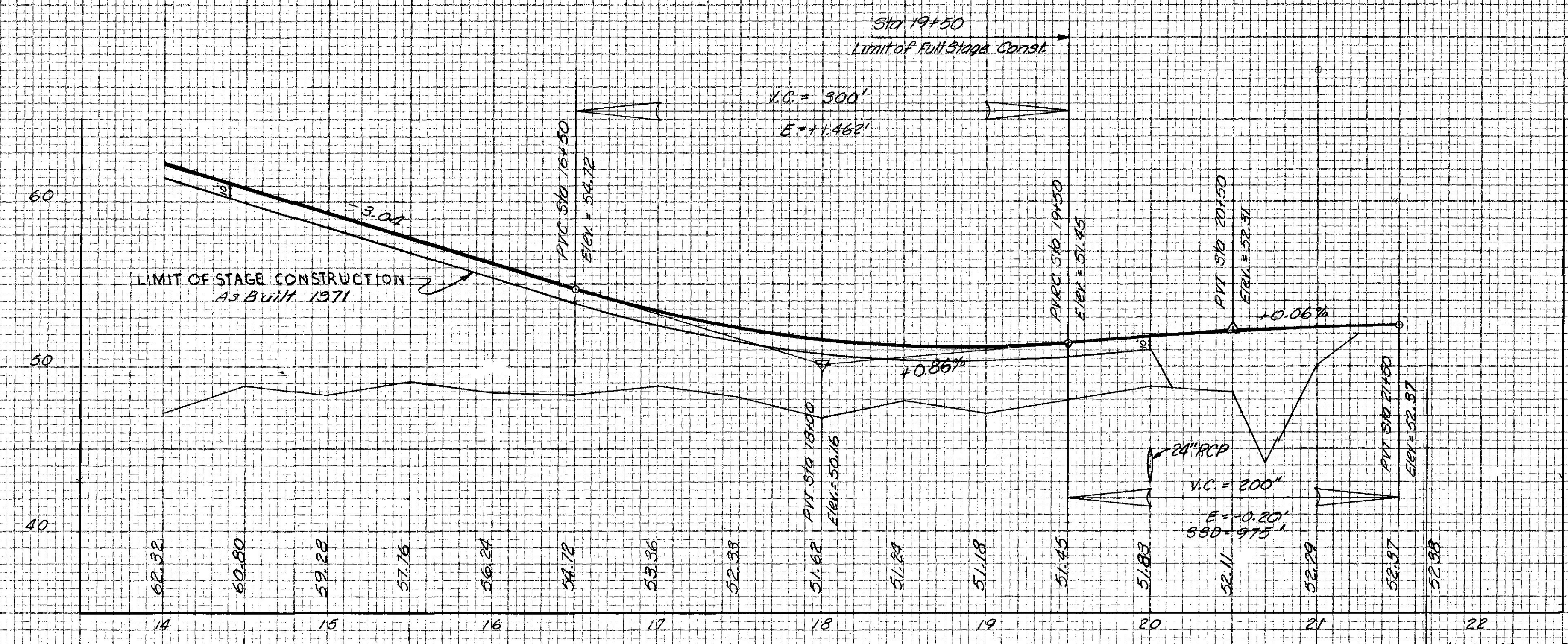
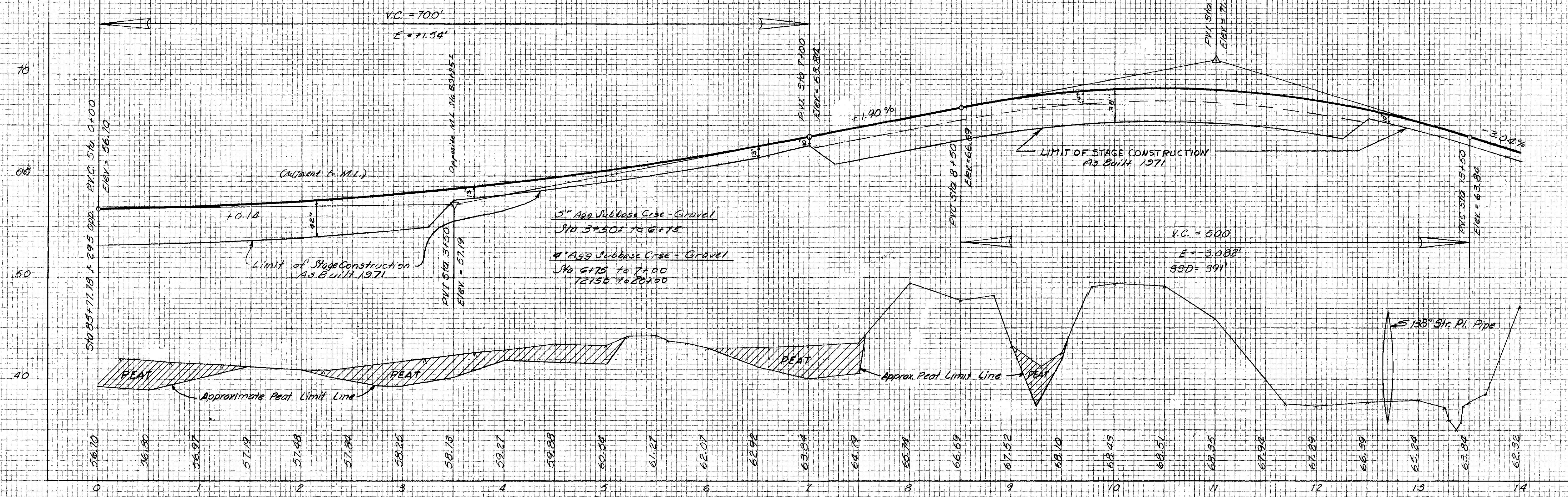
Printed in U.S.A.  
On IMPERIAL Tracing Cloth

Sta. 10+0 to Sta. 33+0



DATE	BY
FINAL SURVEY	
NOTE BOOK	
NO.	

DATE	BY
ORIGINAL SURVEY	
NOTE BOOK	
NO.	



RAMP TPK-7

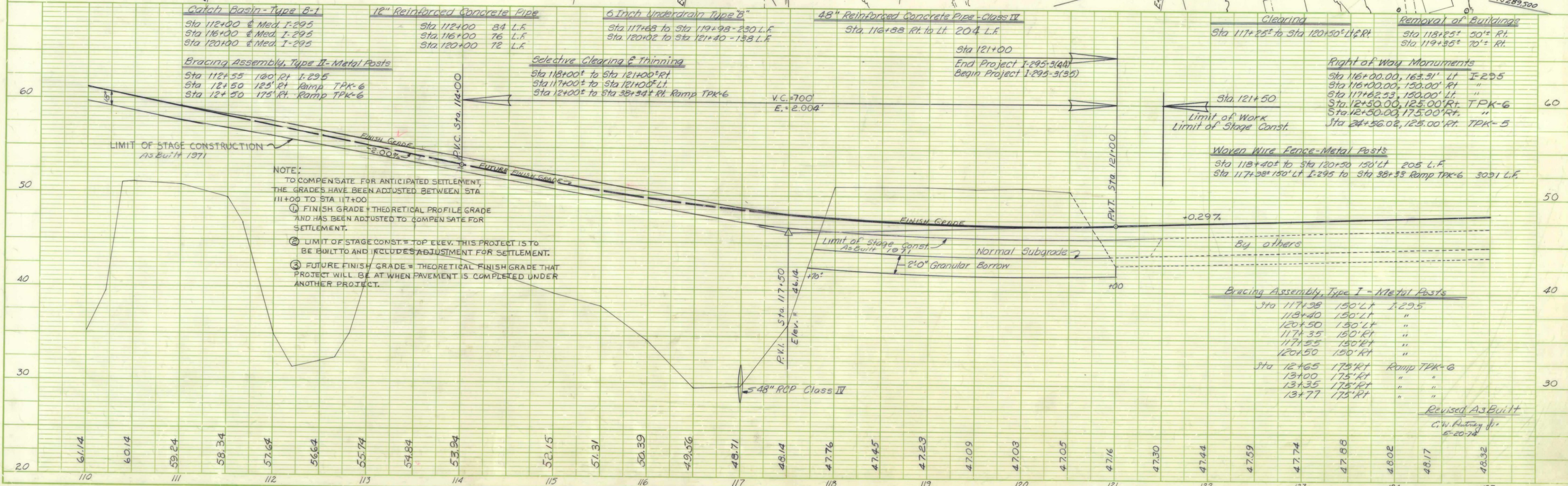
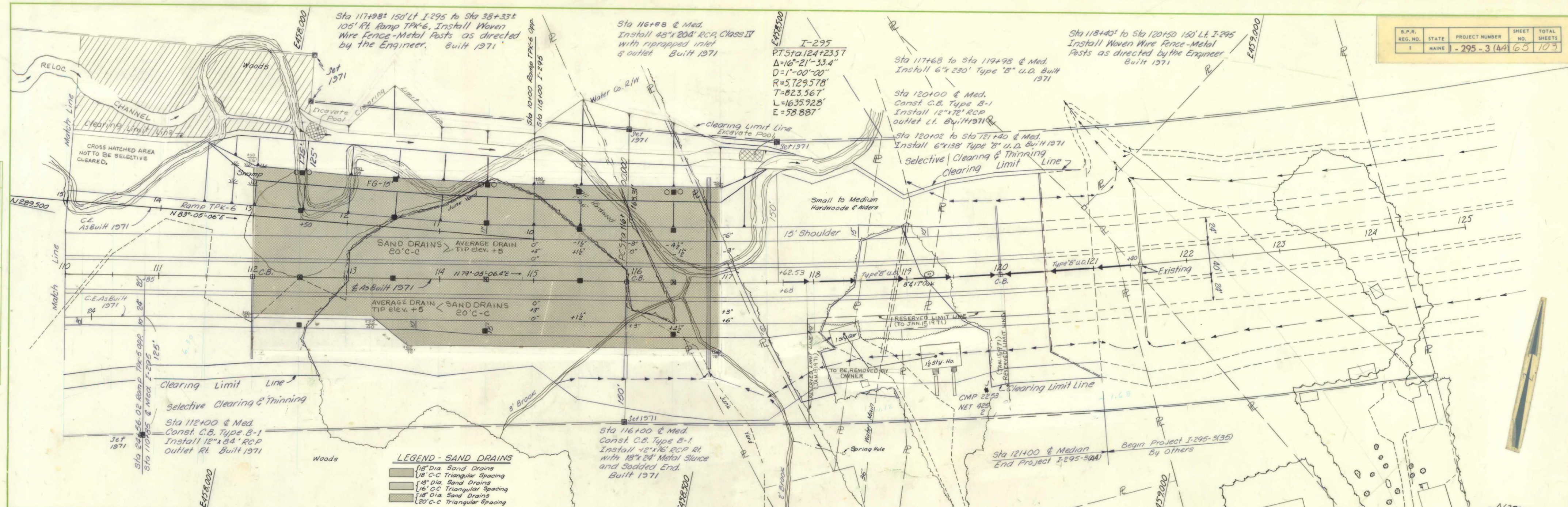
Revised As Built  
C. W. Ristey Jr.  
5-22-74

RAMP TPK-7  
PROFILE



PLAN	DATE	BY
	7-3-69	T.V.W. & R.C.A.
PROFILE	DATE	BY
	7-3-69	T.V.W. & R.C.A.

PROFILE	DATE	BY
	7-3-69	T.V.W. & R.C.A.
PLAN	DATE	BY
	7-3-69	T.V.W. & R.C.A.



S.P.R.	STATE	PROJECT NUMBER	SHEET NO.	TOTAL SHEETS
1	MAINE	-295-3 (44)	65	103



